

Apache Land Subdivision

David Barton, PE

Project Manager

RPS Infrastructure



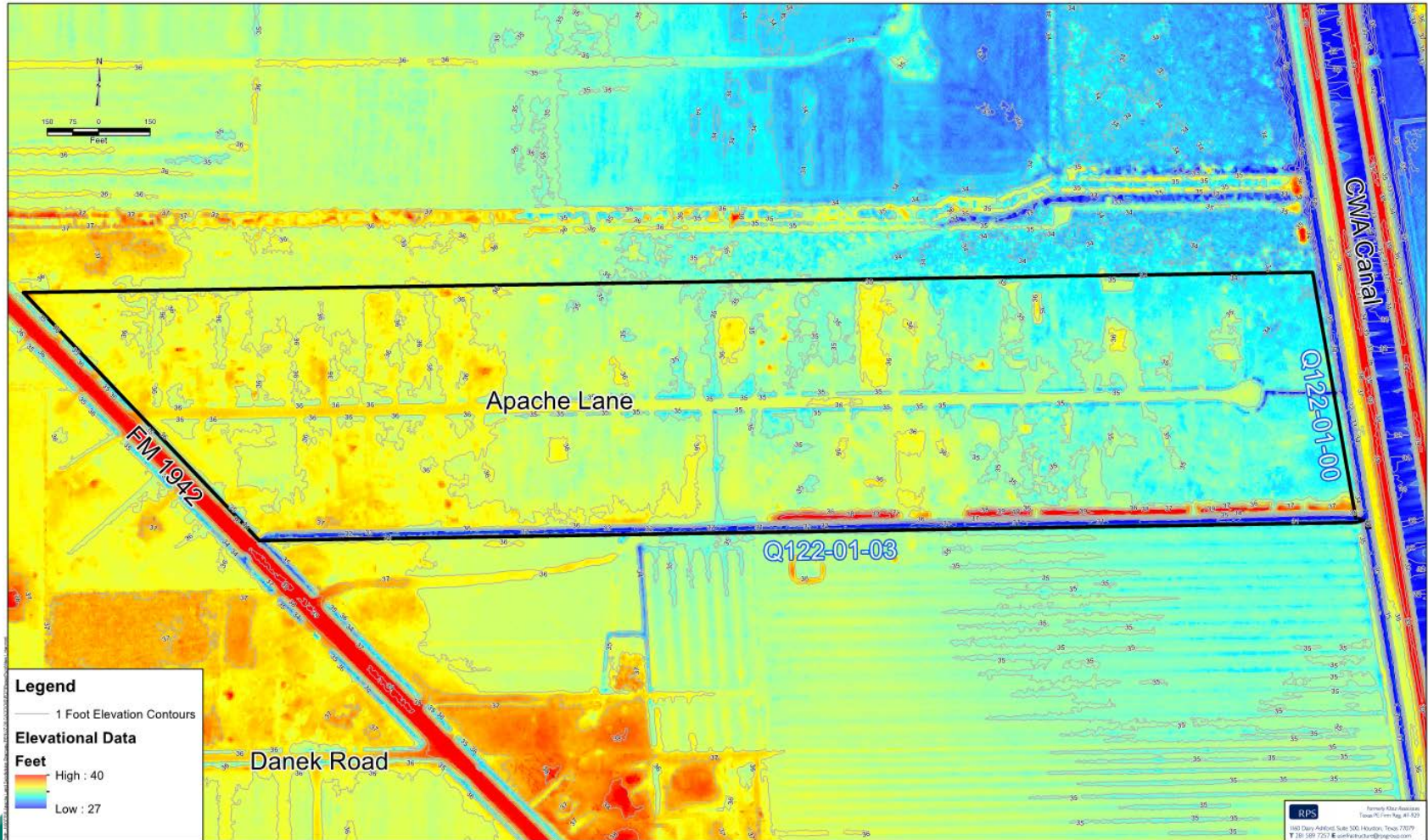
**PROJECT PROGRESS &
COMMUNITY ENGAGEMENT**

2018 | BOND PROGRAM

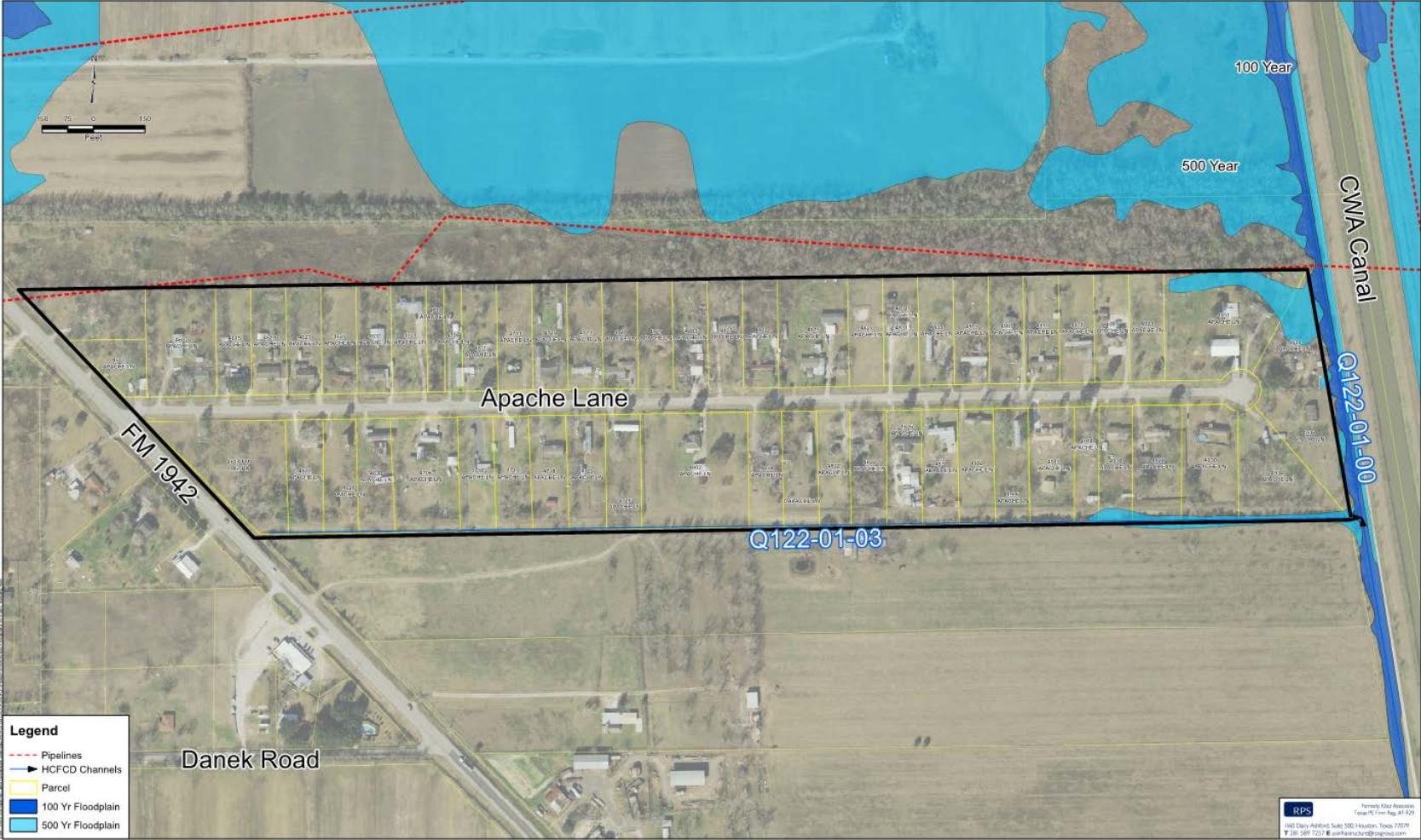
Study Findings

- Apache Land Subdivision was developed in the 1960s and does not meet current County drainage criteria.
- Analyze the drainage system for Apache Land and determine improvements that will meet current Harris County drainage criteria to reduce flooding.
- Recent flooding history includes:
 - 1994 Storm – 9 residences
 - 2017 Harvey – 34 residences
 - Both events Cedar Bayou exceeded 500-year water surface elevation.
- Natural terrain gently slopes to the east

Study Area Elevations



Study Area Floodplain

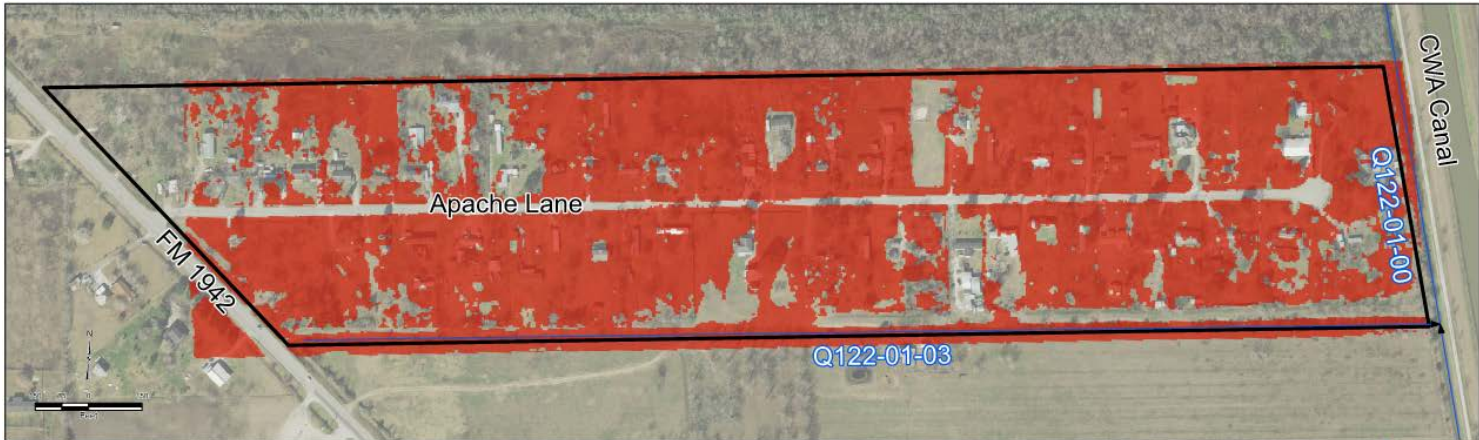


How would this benefit your community?

- Existing roadside ditches and immediate outfalls are restricted.
- Improvements include deepening roadside ditches and improving outfalls and driveway culverts
- Improvements will reduce level and duration of ponding during more frequent storm events.

How would this benefit your community?

BEFORE



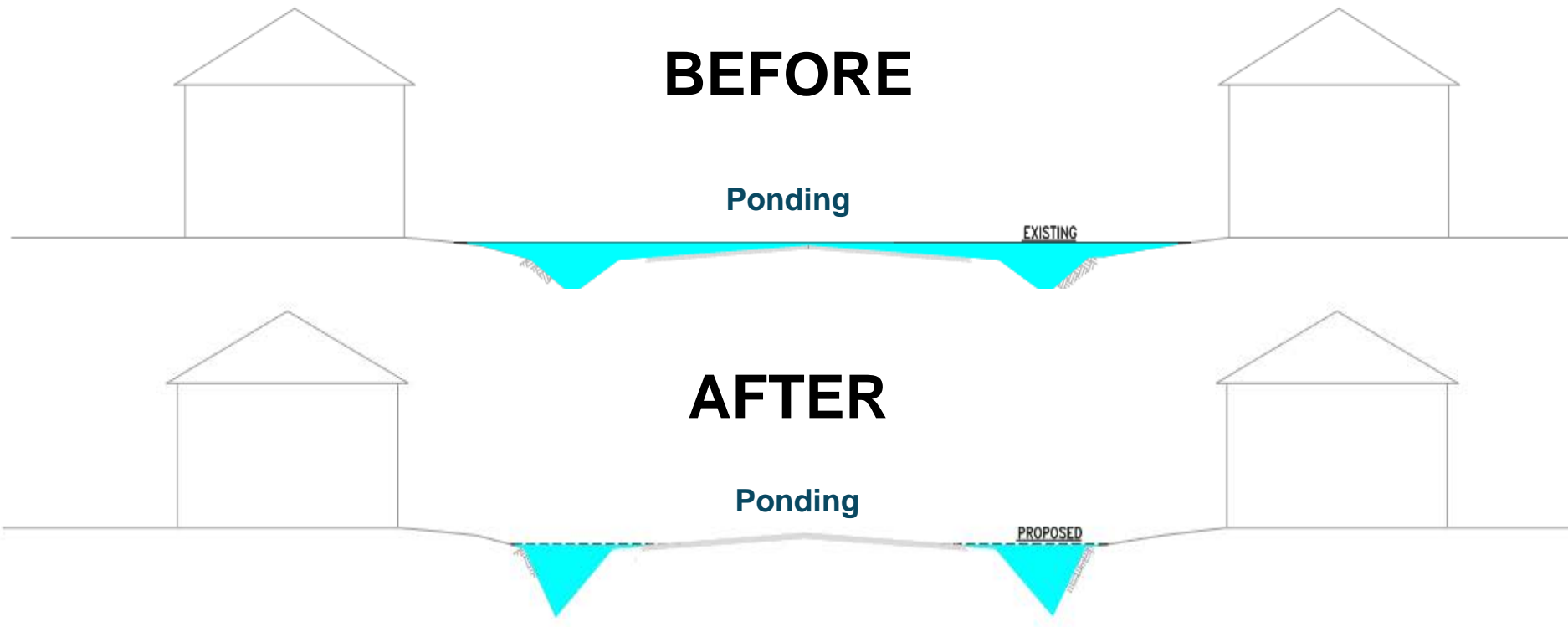
AFTER



Water Surface Reduction of 3 inches to 12 inches



How would this benefit your community?



Water Surface Reduction of 3 inches to 12 inches



We want to hear from you.

Please visit [HCFCD.org/E04](https://www.hcfcfd.org/E04) to learn more about the Apache Land Subdivision, ask questions, and provide comments.





PROJECT PROGRESS & COMMUNITY ENGAGEMENT

2018 | BOND PROGRAM